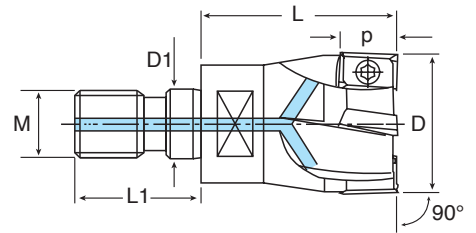
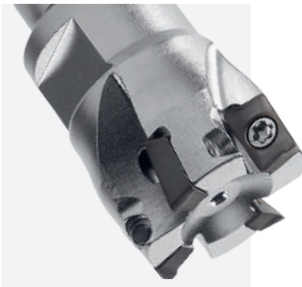
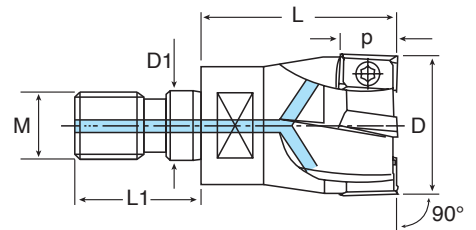
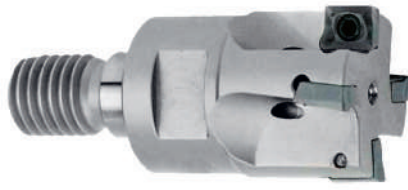
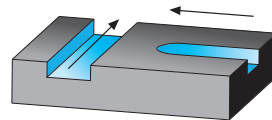
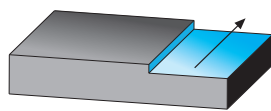


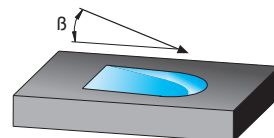
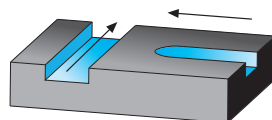
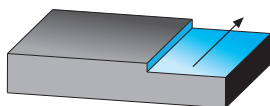
FRESE MODULARI PER SPALLAMENTO EINSCHRAUBKUGELGESENKFRÄSER _ THREADED TYPE MILLING CUTTERS



741MO.N	↔ (mm)								APKT APMX 0602...	VT18	BT06	kg	MILLING	STOCK	€
	D	D1	L	L1	M	p	Z								
741MO D10/2 N	10	6,5	16	14,5	M6	5,2	2				0,010	●	●	170,-	
741MO D12/3 N	12	6,5	16	14,5	M6	5,2	3				0,010	●	●	210,-	
741MO D16/4 N	16	8,5	21	17,5	M8	5,2	4				0,020	●	●	249,-	
741MO D20/5 N	20	10,5	26	20	M10	5,2	5				0,050	●	●	270,-	
741MO D25/7 N	25	12,5	30	22	M12	5,2	7				0,100	●	●	290,-	
741MO D32/8 N	32	17	43	23	M16	5,2	8				0,240	●	●	310,-	

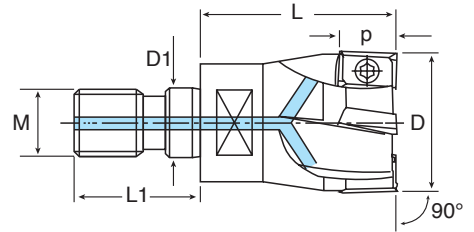
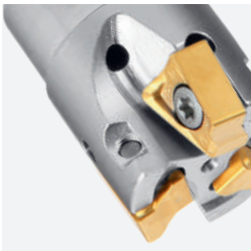


740MO	↔ (mm)									APHT APHX APKT 1003...	VT25	BT08	kg	MILLING	STOCK	€
	D	D1	L	L1	M	p	B	Z								
740MO D10/1	10	6,5	20	14,5	M6	10	11,0°	1				0,010	●	●	140,50	
740MO D12/1	12	6,5	20	14,5	M6	10	9,0°	1				0,010	●	●	140,50	
740MO D16/2	16	8,5	25	17,5	M8	10	3,5°	2				0,020	●	●	170,-	
740MO D20/3	20	10,5	30	20	M10	10	1,5°	3				0,050	●	●	213,50	
740MO D25/3	25	12,5	35	22	M12	10	0,9°	3				0,100	●	●	213,50	
740MO D25/4	25	12,5	35	22	M12	10	0,9°	4				0,900	●	●	253,50	
740MO D28/4	28	12,5	35	22	M12	10	0,9°	4				0,120	●	●	282,-	
740MO D30/4	30	17	43	24	M16	10	0,6°	4				0,210	●	●	282,-	
740MO D32/5	32	17	43	24	M16	10	0,6°	5				0,220	●	●	279,50	



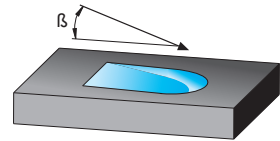
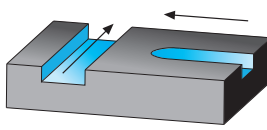
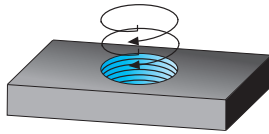
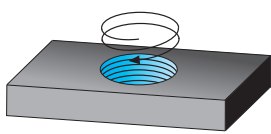
730MO	↔ (mm)									APHT APHX APKT 1604...	VT40	BT15	kg	MILLING	STOCK	€
	D	D1	L	L1	M	p	B	Z								
730MO D32/3	32	17	46	24	M16	17	2,0°	3				0,220	●	●	196,50	
730MO D40/4	40	17	46	24	M16	17	1,5°	4				0,330	●	●	248,-	

FRESE MODULARI PER SPALLAMENTO EINSCHRAUBKUGELGESENKFRÄSER _ THREADED TYPE MILLING CUTTERS

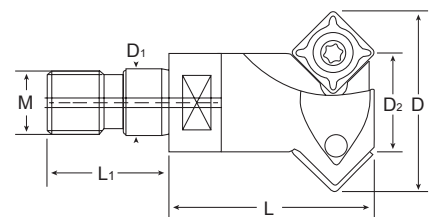
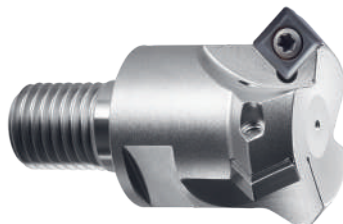
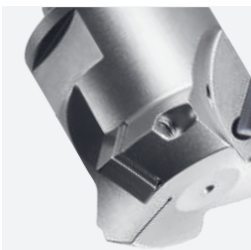


745MO

	D		L		M		p	β	z	✚	🌀	🔧	📊	🔧	STOCK	€
	D	D1	L	L1	M	M	p	β	z	✚	🌀	🔧	📊	🔧	STOCK	€
745MO D20/3	20	10,5	30	20	M10	10	4,0°	3		✚	VT 30 745	BT09	0,050	🔧	●	193,50
745MO D25/3	25	12,5	35	22	M12	10	3,5°	3		✚	VT 30 745	BT09	0,100	🔧	●	236,50
745MO D32/4	32	17	43	24	M16	10	3,0°	4		✚	VT 30 745	BT09	0,230	🔧	●	272,-

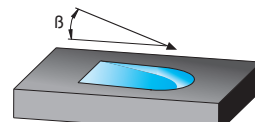
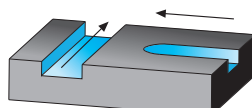
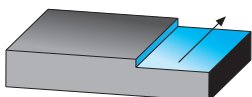


FRESE MODULARI PER SMUSSO EINSCHRAUBFASENFRÄSER _ THREADED TYPE MILLING CUTTERS

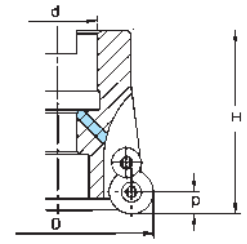


321MO

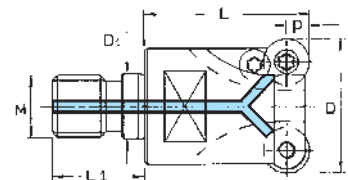
	D		L		M		z	✚	🌀	🔧	📊	🔧	STOCK	€	
	D1	D2	L	L1	M	M	z	✚	🌀	🔧	📊	🔧	STOCK	€	
321MO D12/1	8,5	12	30	17,5	8	10	1	✚	🌀	VT35S	BT15	0,190	🔧	●	135,-
321MO D16/2	10,5	16	30	20	10	10	2	✚	🌀	VT35S	BT15	0,150	🔧	●	165,-
321MO D30/3	17	30	35	24	16	16	3	✚	🌀	VT35S	BT15	0,270	🔧	●	205,50



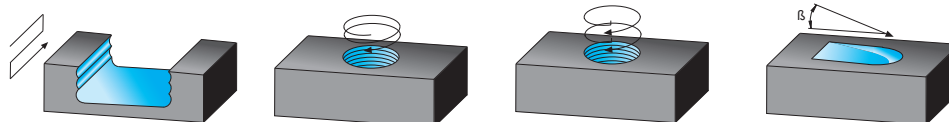
FRESE A COPIARE EINSCHRAUBKUGELGESENKFRÄSER FÜR RUND - WSP _ THREADED TYPE MILLING CUTTERS



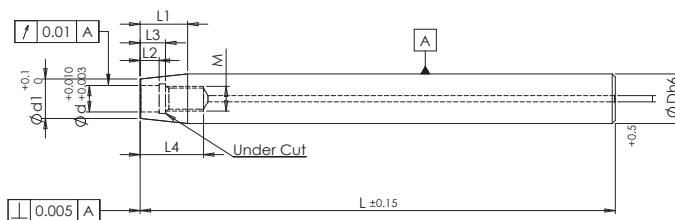
400M	i (mm)						⊕	⌀	⌀	⌀	✂	KG	🔧	STOCK	€
	D	d	H	p	β	z									
400M 042-10/6	42	16	44	5	-	6	RD.. 1003...					0,240	●	●	290,50
400M 052-12/5	52	22	50	6	5,7°	5	RD.. 12T3...	VT35	--	CVB 35	BT15	0,360	●	●	285,-
400M 066-12/6	66	27	50	6	4,1°	6	RD.. 12T3...					0,610	●	●	322,50
400M 080-12/7	80	27	50	6	3,2°	7	RD.. 12T3...					1,080	●	●	360,50
400M 052-16/4	52	22	50	8	8,8°	4	RD.. 1604...					0,330	●	●	285,-
400M 066-16/5	66	27	50	8	6,0°	5	RD.. 1604...					0,500	●	●	411,50
400M 080-16/6	80	27	50	8	4,5°	6	RD.. 1604...	VT45	CVB 45	--	BT20	1,050	●	●	417,50
400M 100-16/7	100	32	55	8	3,7°	7	RD.. 1604...					1,800	●	●	459,-
400M 125-16/8	125	40	55	8	2,8°	8	RD.. 1604...					2,300	●	●	580,-
400M 160-16/9	160	40	55	8	1,8°	9	RD.. 1604...					4,460	●	●	893,50



400MO	i (mm)								⊕	⌀	⌀	⌀	KG	🔧	STOCK	€
	D	L	M	D1	L1	p	β	z								
400MO D10/2	10	18	M6	6,5	14,5	2,5	28,9°	2	RD.. 0501...	VT18	--	--	0,010	●	●	170,50
400MO D20/5	20	30	M10	10,5	20	2,5	6,9°	5	RD.. 0501...				0,060	●	●	302,50
400MO D12/2	12	18	M6	6,5	14,5	3,5	22,7°	2	RD.. 07T1...				0,010	●	●	161,-
400MO D15/2	15	23	M8	8,5	17,5	3,5	20,0°	2	RD.. 0702...				0,020	●	●	161,-
400MO D15/3	15	23	M8	8,5	17,5	3,5	20,0°	3	RD.. 0702...				0,030	●	●	188,-
400MO D20/4	20	30	M10	10,5	20	3,5	11,0°	4	RD.. 0702...	VT2530	--	--	0,060	●	●	242,-
400MO D25/5	25	35	M12	12,5	22	3,5	7,3°	5	RD.. 0702...				0,100	●	●	278,50
400MO D30/5	30	43	M16	17	24	3,5	5,4°	5	RD.. 0702...				0,200	●	●	309,-
400MO D20/2	20	30	M10	10,5	20	5	39,0°	2	RD.. 1003...				0,050	●	●	170,50
400MO D25/2	25	35	M12	12,5	22	5	14,3°	2	RD.. 1003...				0,100	●	●	170,50
400MO D25/3	25	35	M12	12,5	22	5	14,3°	3	RD.. 1003...				0,090	●	●	188,-
400MO D30/4	30	43	M16	17	24	5	9,3°	4	RD.. 1003...	VT35	--	--	0,200	●	●	252,50
400MO D35/4	35	43	M16	17	24	5	7,3°	4	RD.. 1003...				0,200	●	●	257,50
400MO D35/5	35	43	M16	17	24	5	7,3°	5	RD.. 1003...				0,250	●	●	314,50
400MO D42/5	42	43	M16	17	24	5	5,4°	5	RD.. 1003...				0,250	●	●	318,-
400MO D24/2	24	35	M12	12,5	22	6	-	2	RD.. 12T3...				0,100	●	●	182,-
400MO D35/3	35	43	M16	17	24	6	-	3	RD.. 12T3...	VT35	--	CVB 35	0,200	●	●	204,-
400MO D42/4	42	43	M16	17	24	6	8,3°	4	RD.. 12T3...				0,250	●	●	264,50
400MO D32/2	32	43	M16	17	24	8	-	2	RD.. 1604...	VT45	CVB 45	--	0,200	●	●	204,-

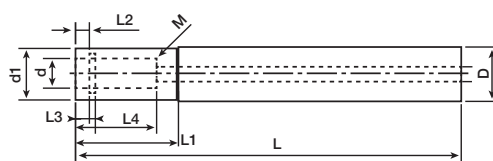


ADATTATORI IN METALLO DURO _ VHM VERLÄNGERUNGEN _ CARBIDE ADAPTORS



PCIMD

	D	d	d1	L (mm)				M	KG		STOCK	€
PCIMD12 060 M06	12	6,5	9,7	60	15	5	8	19	6	0,100	●	377,-
PCIMD12 080 M06	12	6,5	9,7	80	15	5	8	19	6	0,140	●	506,-
PCIMD12 100 M06	12	6,5	9,7	100	15	5	8	19	6	0,200	●	532,50
PCIMD12 150 M06	12	6,5	9,7	150	15	5	8	19	6	0,300	●	618,-
PCIMD16 080 M08	16	8,5	12,7	80	15	6	9	20	8	0,350	●	553,-
PCIMD16 100 M08	16	8,5	12,7	100	15	6	9	20	8	0,350	●	584,-
PCIMD16 120 M08	16	8,5	12,7	120	15	6	9	20	8	0,350	●	703,50
PCIMD16 150 M08	16	8,5	12,7	150	15	6	9	20	8	0,350	●	744,-
PCIMD16 200 M08	16	8,5	12,7	200	15	6	9	20	8	0,600	●	832,-
PCIMD20 100 M10	20	10,5	17,7	100	20	10	13	26	10	0,500	●	925,50
PCIMD20 140 M10	20	10,5	17,7	140	20	10	13	26	10	0,700	●	971,-
PCIMD20 200 M10	20	10,5	17,7	200	20	10	13	26	10	0,900	●	1433,50
PCIMD25 100 M12	25	12,5	20,7	100	30	10	13	26	12	0,500	●	1198,-
PCIMD25 150 M12	25	12,5	20,7	150	30	10	13	26	12	0,500	●	1462,-
PCIMD25 200 M12	25	12,5	20,7	200	30	10	13	26	12	0,900	●	1554,50
PCIMD25 250 M12	25	12,5	20,7	250	30	10	13	26	12	1,-0	●	1889,50
PCIMD32 100 M16	32	17	28,7	100	30	10	14	30	16	1,250	●	1657,-
PCIMD32 150 M16	32	17	28,7	150	30	10	14	30	16	1,900	●	2308,-



PCCMD

	D	d	d1	L (mm)				M	KG		STOCK	€
PCCMD10 150 M6	10	6,5	9,8	150	30	5	7	19	6	0,300	○	447,-
PCCMD12 150 M6	12	6,5	10,8	150	27	5	7	19	6	0,300	○	617,-
PCCMD16 150 M8	16	8,5	15	150	27	6	8	20	8	0,350	○	743,-
PCCMD16 200 M8	16	8,5	15	200	31	6	8	20	8	0,600	○	833,-
PCCMD20 200 M10	20	10,5	18	200	36	10	12	24	10	0,900	○	1428,-
PCCMD20 250 M10	20	10,5	18	250	44	10	12	24	10	1,-0	○	1534,50
PCCMD25 200 M12	25	12,5	22,5	200	36	10	12	26	12	0,500	○	1553,50
PCCMD25 250 M12	25	12,5	22,5	250	44	10	12	26	12	1,-0	○	1889,50
PCCMD32 250 M16	32	17	28,6	250	44	10	13	28	16	2,100	○	3126,-
PCCMD32 300 M16	32	17	28,6	300	52	10	13	28	16	2,300	○	3668,50