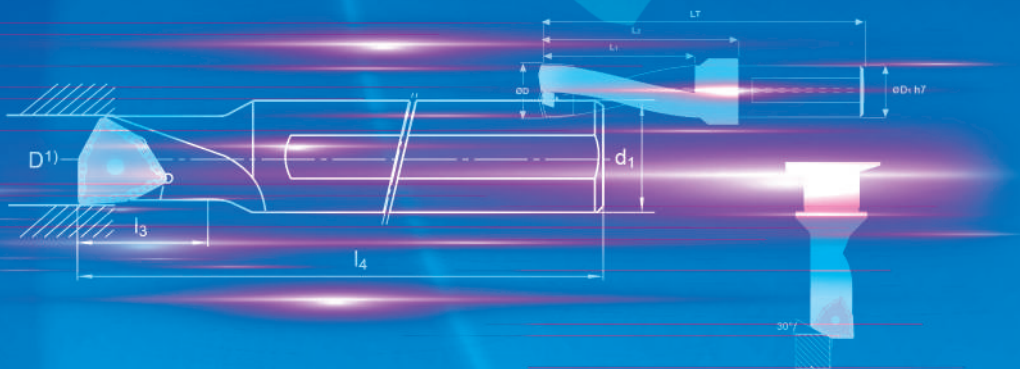


GE DRILLS



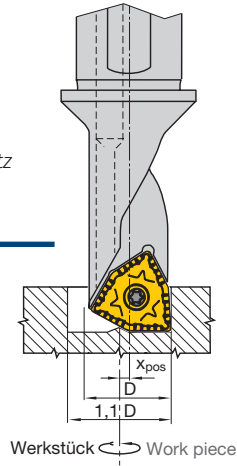
PUNTE AD INSERTI MULTIFUNZIONE MULTIFUNCTION WENDEPLATTENVOLLBOHRER _ MULTI-FUNCTION INDEXABLE INSERT DRILLING TOOL

Technische Hinweise _ Technical hints

Nebenschneide einsetzbar
Secondary cutting edge can be used

Weitere Konstruktionsmerkmale und Vorteile
Additional features and application possibilities

Bohren ins Volle außer
der Mitte, positiver Versatz
Drilling off center,
positive offset



X_{pos} : Versatz aus der Mitte positiv
Offset, positive

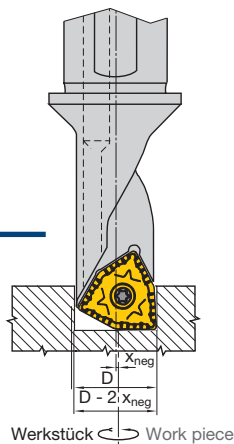
D : Nenndurchmesser Werkzeug
Nominal tool diameter

Acciaio
Stahl
Steel $X_{pos} = \frac{(1,1 \times D) - D}{2}$

Alluminio
Aluminium
Aluminium $X_{pos} = \frac{(1,5 \times D) - D}{2}$

Werkzeug Tool 2,25D/1,50D	D	Acciaio Stahl Steel		Alluminio Aluminium Aluminium	
		D_{max}	X_{pos}	D_{max}	X_{pos}
PTR/L 08 -x,xxD- 04	08H13	8,8	0,40	12,0	2,00
PTR/L 10 -x,xxD- 05	10H13	11,0	0,50	15,0	2,50
PTR/L 11 -x,xxD- 06	11H13	12,1	0,55	16,5	2,75
PTR/L 15 -x,xxD- 07	15H13	16,5	0,75	22,5	3,75
PTR/L 18 -x,xxD- 09	18H13	19,8	0,90	27,0	4,50
PTR/L 20 -x,xxD- 10	20H13	22,0	1,00	30,0	5,00
PTR/L 26 -x,xxD- 13	26H13	28,6	1,30	39,0	6,50

Bohren ins Volle außer der
Mitte, negativer Versatz
Drilling off center,
negative offset



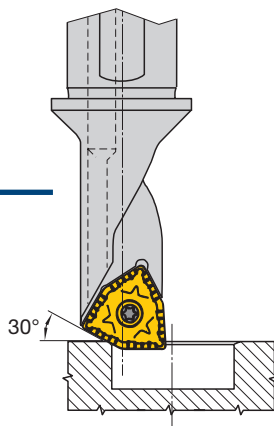
X_{neg} : Versatz aus der Mitte negativ
Offset, negative

D : Nenndurchmesser Werkzeug
Nominal tool diameter

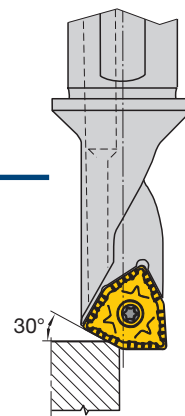
$$X_{neg} = \frac{D_{min} - D}{2}$$

Werkzeug Tool 2,25D/1,50D	D	D_{min}	X_{neg}
PTR/L 08 -x,xxD- 04	08H13	7,8	0,10
PTR/L 10 -x,xxD- 05	10H13	9,8	0,10
PTR/L 11 -x,xxD- 06	11H13	10,8	0,10
PTR/L 15 -x,xxD- 07	15H13	14,7	0,15
PTR/L 18 -x,xxD- 09	18H13	17,7	0,15
PTR/L 20 -x,xxD- 10	20H13	19,7	0,15
PTR/L 26 -x,xxD- 13	26H13	25,7	0,15

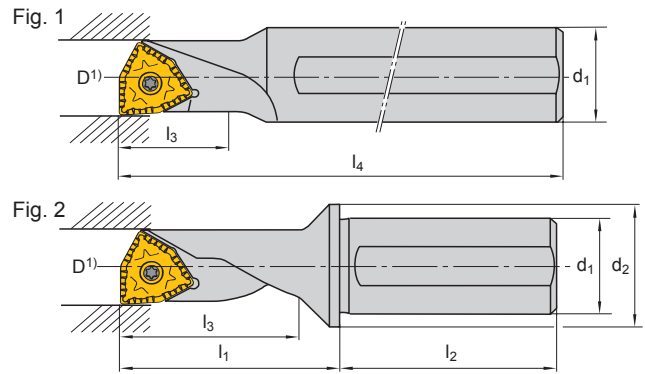
Anfasen innen
Internal chamfering



Anfasen außen
External chamfering





PUNTE AD INSERTI MULTIFUNZIONE
MULTIFUNKTION WENDEPLATTENVOLLBOHRER _ MULTI-FUNCTION INDEXABLE INSERT DRILLING TOOL



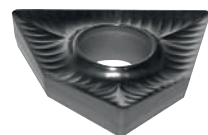
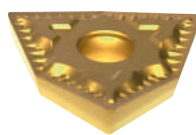
PTR/L	Fig	D ¹⁾	↔ (mm)						WCHX	KG	STOCK	€
			d1	d2	l1	l2	l3	l4				
PTR/L 08 - 1,50D-04	1	8	12	-	-	-	12,0	80	WCHX 04...	0,030	●	249,-
PTR/L 08 - 2,25D-04	2	8	10	12	22,5	38	18,0	-	WCHX 04...	0,050	●	263,50
PTR/L 10 - 1,50D-05	1	10	12	-	-	-	15,0	90	WCHX 05...	0,040	●	253,50
PTR/L 10 - 2,25D-05	2	10	12	16	28	42	22,5	-	WCHX 05...	0,060	●	273,-
PTR/L 11 - 1,50D-06	1	11	16	-	-	-	16,5	100	WCHX 06...	0,080	●	253,50
PTR/L 11 - 2,25D-06	2	11	16	20	32	45	24,75	-	WCHX 06...	0,130	●	273,-
PTR/L 15 - 1,50D-07	1	15	20	-	-	-	22,5	125	WCHX 07...	0,150	●	298,50
PTR/L 15 - 2,25D-07	2	15	20	25	43	50	33,75	-	WCHX 07...	0,240	●	309,-
PTR/L 18 - 1,50D-09	1	18	25	-	-	-	27,0	135	WCHX 09...	0,280	●	303,-
PTR/L 18 - 2,25D-09	2	18	25	32	53	56	40,5	-	WCHX 09...	0,400	●	323,-
PTR/L 20 - 1,50D-10	1	20	25	-	-	-	30,0	150	WCHX 10...	0,290	●	309,-
PTR/L 20 - 2,25D-10	2	20	25	32	56	56	45,0	-	WCHX 10...	0,460	●	323,-
PTR/L 26 - 1,50D-13	1	26	32	-	-	-	39,0	180	WCHX 13...	0,570	●	387,50
PTR/L 26 - 2,25D-13	2	26	32	40	73	60	58,5	-	WCHX 13...	0,910	●	412,-

RICAMBI _ Ersatzteile _ Spare parts

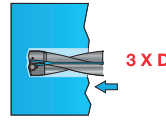
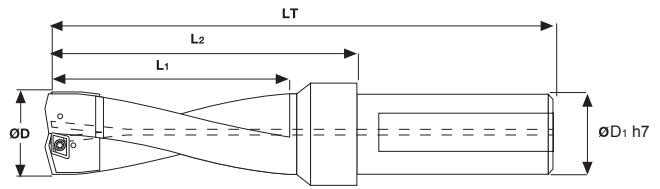
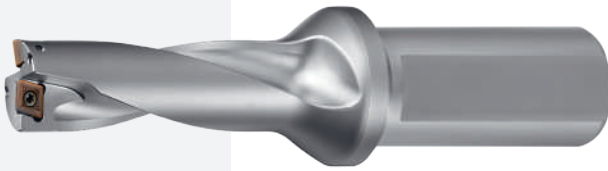
PTR/L			Torx Torx Torx	Momento torsione Anzugsmoment Torque [Ncm]
PTR/L 08	A02-20033	V04-T0600	06	62
PTR/L 10	A13-25042	V04-T0800	08	128
PTR/L 11	A13-25050	V04-T0800	08	128
PTR/L 15	A13-30073	V04-T0800	08	180
PTR/L 18	A02-35082	V04-T1500	15	345
PTR/L 20	A06-50088	V04-T2000	20	1020
PTR/L 26	A02-60120	V04-T2500	25	1750

INSERTI _ Wendeplatten _ Inserts

P300	K400	K15
------	------	-----

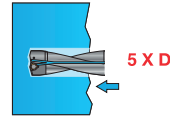
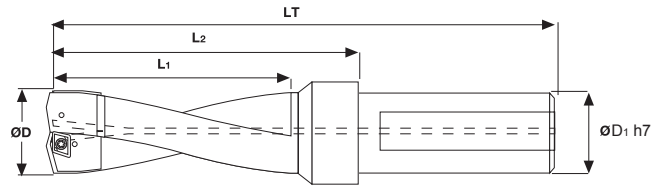
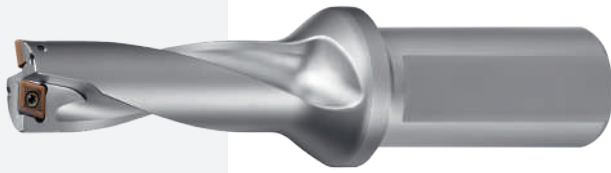


PUNTE AD INSERTI _ WENDEPLATTENVOLLBOHRER _ INDEXABLE INSERT DRILLING-TOOLS



TDXP - 3 X D	↔ (mm)					XPMT	BFTX	BT	KG	STOCK	€
	Ød	ØD1	LT	L1	L2						
TDXP 140-30 R	14	20	104	43	60	XPMT 042004...	BFTX 01604N	BT06	0,380	●	400,50
TDXP 150-30 R	15	20	107	46	63				0,380	●	400,50
TDXP 160-30 R	16	20	110	49	66				0,380	●	400,50
TDXP 170-30 R	17	20	113	52	69	XPMT 052804...	BFTX 0204N		0,380	●	400,50
TDXP 180-30 R	18	20	116	55	72				0,380	●	400,50
TDXP 190-30 R	19	25	134	58	78				0,380	●	400,50
TDXP 200-30 R	20	25	137	61	81	XPMT 063306...	BFTX 02206N	BT07	0,390	●	400,50
TDXP 210-30 R	21	25	140	64	84				0,410	●	400,50
TDXP 220-30 R	22	25	143	67	87				0,410	●	400,50
TDXP 230-30 R	23	25	146	70	90				0,420	●	417,-
TDXP 240-30 R	24	25	149	73	93				0,420	●	432,50
TDXP 250-30 R	25	25	152	76	96				0,460	●	432,50
TDXP 260-30 R	26	25	155	79	99	XPMT 074006...	BFTX 02506N	BT08	0,480	●	432,50
TDXP 270-30 R	27	25	158	82	102				0,500	●	432,50
TDXP 280-30 R	28	25	161	85	105				0,530	●	432,50
TDXP 290-30 R	29	32	170	88	110				0,550	●	432,50
TDXP 300-30 R	30	32	173	91	113				0,850	●	470,-
TDXP 310-30 R	31	32	176	94	116				0,870	●	470,-
TDXP 320-30 R	32	32	179	97	119				0,880	●	470,-
TDXP 330-30 R	33	32	182	100	122	XPMT 094508...	BFTX 03584	BT15	0,910	●	470,-
3 X D TDXP 340-30 R	34	32	185	103	125				0,950	●	470,-
TDXP 350-30 R	35	32	188	106	128				0,980	●	490,-
TDXP 360-30 R	36	32	191	109	131				1,020	●	548,50
TDXP 370-30 R	37	32	194	112	134				1,060	●	548,50
TDXP 380-30 R	38	32	197	115	137				1,090	●	548,50
TDXP 390-30 R	39	32	200	118	140				1,130	●	548,50
TDXP 400-30 R	40	32	203	121	143				1,180	●	548,50
TDXP 410-30 R	41	32	206	124	146	XPMT 125812...	BFTX 0511N	BT20	1,230	●	548,50
TDXP 420-30 R	42	40	220	127	150				1,270	●	548,50
TDXP 430-30 R	43	40	223	130	153				1,310	●	548,50
TDXP 440-30 R	44	40	226	133	156				1,350	●	591,-
TDXP 450-30 R	45	40	229	136	159				1,910	●	591,-
TDXP 460-30 R	46	40	240	139	170				1,930	●	591,-
TDXP 470-30 R	47	40	243	141	173				2,020	●	591,-
TDXP 480-30 R	48	40	246	144	176				2,090	●	617,50
TDXP 490-30 R	49	40	249	147	179				2,120	●	617,50
TDXP 500-30 R	50	40	252	150	182	XPMT 156812...	BFTX 0615N	BT25	2,220	●	617,50
TDXP 510-30 R	51	40	255	153	185				2,270	●	617,50
TDXP 520-30 R	52	40	258	156	188				2,320	●	617,50
TDXP 530-30 R	53	40	261	159	191				2,520	●	617,50
TDXP 540-30 R	54	40	264	162	194				2,570	●	617,50
TDXP 550-30 R	55	40	267	165	197				2,820	●	617,50

PUNTE AD INSERTI _ WENDEPLATTENVOLLBOHRER _ INDEXABLE INSERT DRILLING-TOOLS



TDXP - 5 X D	↔ (mm)					XPMT	BFTX	BT	KG	STOCK	€
	Ød	ØD1	LT	L1	L2						
TDXP 140-50 R	14	20	132	71	88	042004...	01604N	BT06	0,420	●	459,-
TDXP 150-50 R	15	20	137	76	93						459,-
TDXP 160-50 R	16	20	142	81	98						459,-
TDXP 170-50 R	17	20	147	86	103	052804...	0204N	BT06	0,420	●	459,-
TDXP 180-50 R	18	20	152	91	108						459,-
TDXP 190-50 R	19	25	172	96	116						459,-
TDXP 200-50 R	20	25	177	101	121	063306...	02206N	BT07	0,500	●	459,-
TDXP 210-50 R	21	25	182	106	126						459,-
TDXP 220-50 R	22	25	187	111	131						459,-
TDXP 230-50 R	23	25	192	116	136	074006...	02506N	BT08	0,570	●	475,-
TDXP 240-50 R	24	25	197	121	141						495,50
TDXP 250-50 R	25	25	202	126	146						495,50
TDXP 260-50 R	26	25	207	131	151	094508...	03584	BT15	0,590	●	495,50
TDXP 270-50 R	27	25	212	136	156						495,50
TDXP 280-50 R	28	25	217	141	161						495,50
TDXP 290-50 R	29	32	228	146	168	125812...	0511N	BT20	0,670	●	495,50
TDXP 300-50 R	30	32	233	151	173						538,50
TDXP 310-50 R	31	32	238	156	178						538,50
TDXP 320-50 R	32	32	243	161	183	156812...	0615N	BT25	0,970	●	538,50
TDXP 330-50 R	32	32	248	166	188						538,50
TDXP 340-50 R	32	32	253	171	193						538,50
TDXP 350-50 R	35	32	258	176	198	156812...	0615N	BT25	1,000	●	538,50
TDXP 360-50 R	35	32	258	176	198						559,-
TDXP 370-50 R	36	32	263	181	203						616,-
TDXP 380-50 R	37	32	268	186	208	156812...	0615N	BT25	1,300	●	616,-
TDXP 390-50 R	37	32	268	186	208						616,-
TDXP 400-50 R	38	32	273	191	213						616,-
TDXP 410-50 R	38	32	273	191	213	156812...	0615N	BT25	1,400	●	616,-
TDXP 420-50 R	39	32	278	196	218						616,-
TDXP 430-50 R	39	32	278	196	218						616,-
TDXP 440-50 R	40	32	283	201	223	156812...	0615N	BT25	1,500	●	616,-
TDXP 450-50 R	40	32	288	206	228						616,-
TDXP 460-50 R	40	32	288	206	228						616,-
TDXP 470-50 R	42	40	304	211	234	156812...	0615N	BT25	1,600	●	616,-
TDXP 480-50 R	42	40	304	211	234						616,-
TDXP 490-50 R	42	40	304	211	234						616,-
TDXP 500-50 R	43	40	309	216	239	156812...	0615N	BT25	1,600	●	616,-
TDXP 510-50 R	43	40	309	216	239						661,50
TDXP 520-50 R	43	40	309	216	239						661,50
TDXP 530-50 R	44	40	314	221	244	156812...	0615N	BT25	1,700	●	661,50
TDXP 540-50 R	44	40	314	221	244						661,50
TDXP 550-50 R	44	40	314	221	244						661,50
TDXP 560-50 R	45	40	319	226	249	156812...	0615N	BT25	2,400	●	661,50
TDXP 570-50 R	45	40	319	226	249						661,50
TDXP 580-50 R	45	40	319	226	249						661,50
TDXP 590-50 R	46	40	332	231	262	156812...	0615N	BT25	2,400	●	661,50
TDXP 600-50 R	46	40	332	231	262						661,50
TDXP 610-50 R	46	40	332	231	262						661,50
TDXP 620-50 R	47	40	337	235	267	156812...	0615N	BT25	2,500	●	661,50
TDXP 630-50 R	47	40	337	235	267						693,-
TDXP 640-50 R	47	40	337	235	267						693,-
TDXP 650-50 R	48	40	342	240	272	156812...	0615N	BT25	2,600	●	693,-
TDXP 660-50 R	48	40	342	240	272						693,-
TDXP 670-50 R	48	40	342	240	272						693,-
TDXP 680-50 R	49	40	347	247	277	156812...	0615N	BT25	2,600	●	693,-
TDXP 690-50 R	49	40	347	247	277						693,-
TDXP 700-50 R	49	40	347	247	277						693,-
TDXP 710-50 R	50	40	352	250	282	156812...	0615N	BT25	2,800	●	693,-
TDXP 720-50 R	50	40	352	250	282						693,-
TDXP 730-50 R	50	40	352	250	282						693,-
TDXP 740-50 R	51	40	357	255	287	156812...	0615N	BT25	2,800	●	693,-
TDXP 750-50 R	51	40	357	255	287						693,-
TDXP 760-50 R	51	40	357	255	287						693,-
TDXP 770-50 R	52	40	362	260	292	156812...	0615N	BT25	2,900	●	693,-
TDXP 780-50 R	52	40	362	260	292						693,-
TDXP 790-50 R	52	40	362	260	292						693,-
TDXP 800-50 R	53	40	367	265	297	156812...	0615N	BT25	3,100	●	693,-
TDXP 810-50 R	53	40	367	265	297						693,-
TDXP 820-50 R	53	40	367	265	297						693,-
TDXP 830-50 R	54	40	372	270	302	156812...	0615N	BT25	3,200	●	693,-
TDXP 840-50 R	54	40	372	270	302						693,-
TDXP 850-50 R	54	40	372	270	302						693,-
TDXP 860-50 R	55	40	377	275	307	156812...	0615N	BT25	3,500	●	693,-
TDXP 870-50 R	55	40	377	275	307						693,-
TDXP 880-50 R	55	40	377	275	307						693,-

